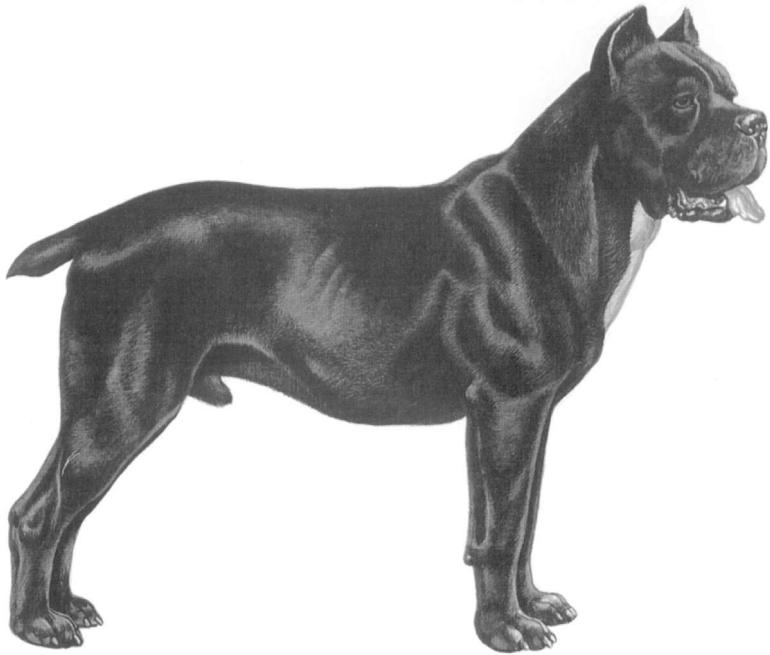


CI-Standard N° 343 / 06. 06. 2007/ GB

ITALIAN CORSO DOG

(Cane Corso Italiano)



TRANSLATION : Dr. Antonio Morsiani, Dr. J.-M. Paschoud and Prof. R. Triquet.

ORIGIN : Italy.

DATE OF PUBLICATION OF THE ORIGINAL VALID STANDARD : 21.05.2007.

UTILIZATION : Guard-, protection-, police-and tracking dog.

CLASSIFICATION F.C.I. : Group 2 Pinscher and Schnauzer,
Molossian and Swiss
Mountain- and Cattle dogs.
Section 2.1 Molosside breeds, Mastiff
type.
Without working trial.

BRIEF HISTORICAL SUMMARY : Its direct ancestor is the old Roman Molossian. Formerly scattered all over Italy, in the recent past, the breed was only prevalent in the Province Apulia and in the adjacent regions of Southern Italy. His name derives from the Latin « cohorts », which means « protector, guardian of the farmyard ».

GENERAL APPEARANCE : Medium to large-sized. Robust and sturdy, nevertheless elegant. Lean, powerful muscles.

IMPORTANT PROPORTIONS : The length of the head reaches 36 % of the height at withers. The dog is somewhat longer than high.

BEHAVIOUR / TEMPERAMENT : Guardian of property, family and livestock; extremely agile and responsive. In the past, it has been used for herding cattle and hunting big game.

HEAD : Large and typically molossoid. The upper longitudinal axes of the skull and the muzzle converge slightly.

CRANIAL REGION :

Skull : Wide; at the zygomatic arches its width is equal to or greater than its length. Convex in front, it becomes fairly flat behind the forehead as far as the occiput. The medio-frontal furrow is visible.

Stop : Marked.

FACIAL REGION :

Nose : Black and large with ample, open nostrils, on the same line as the nasal bridge.

Muzzle : Noticeably shorter than the skull (ratio muzzle : skull approximately 1 : 2). Strong, square; the front part of the muzzle is flat; the lateral surfaces are parallel; the muzzle is as wide as long. The profile of the nasal bridge is straight.

Lips : The upper lips hang moderately and cover the mandible, so that the lower profile of the muzzle is determined by the lips.

Jaws/Teeth : Jaws very large, thick and curved. Slightly undershot. Level bite acceptable, but not sought after.

Eyes : Medium-sized, ovoid, looking directly forward, slightly protruding. Eyelids close fitting. Colour of iris as dark as possible, depending from the colour of the coat. Expression keen and attentive.

Ears : Triangular, drooping, with a wide set on high above the zygomatic arches. Often cropped in the shape of an equilateral triangle.

NECK : Strong, muscular, as long as the head.

BODY : The body is somewhat longer than the height at the withers. Sturdily built, but not squat.

Withers : Pronounced, rising above the level of the croup.

Back : Rectilinear, very muscular and firm.

Loins : Short and strong.

Croup : Long, wide, slightly inclined.

Chest : Well developed in three dimensions, reaches to the elbow.

TAIL : Set on fairly high; very thick at the root. The tail is docked at the fourth vertebra. In action carried high, but never curled nor erect.

-

Weight : Males from 45 to 50 kg,
 females from 40 to 45 kg.

FAULTS : Any departure from the foregoing points should be considered a fault and the seriousness with which the fault should be regarded should be in exact proportion to its degree.

SEVERE FAULTS :

- Axes of muzzle and skull parallel or too converging; lateral surfaces of the muzzle converging.
- Partial depigmentation of the nose.
- Scissor bite; pronounced undershot mouth.
- Ring-tail, tail in vertical position.
- Permanent amble when trotting.
- Over-or undersize.

ELIMINATING FAULTS :

- Aggressive or overly shy.
- Axes of muzzle and skull diverging.
- Total depigmentation of the nose.
- Bridge of nose very hollow, rams' nose.
- Overshot mouth.
- Partial or complete palpebral depigmentation. Wall eye; strabism.
- Tailless, short tail (docked or not).
- Semi-long, smooth or fringed hair.
- All colours not indicated in the standard; large white patches.

Any dog clearly showing physical or behavioural abnormalities shall be disqualified.

N.B. : Male animals should have two apparently normal testicles fully descended into the scrotum.